



EV-FLEX EU™

Electric Vehicle Level 2 Charging Station

Cellular & Wifi Setup Guide

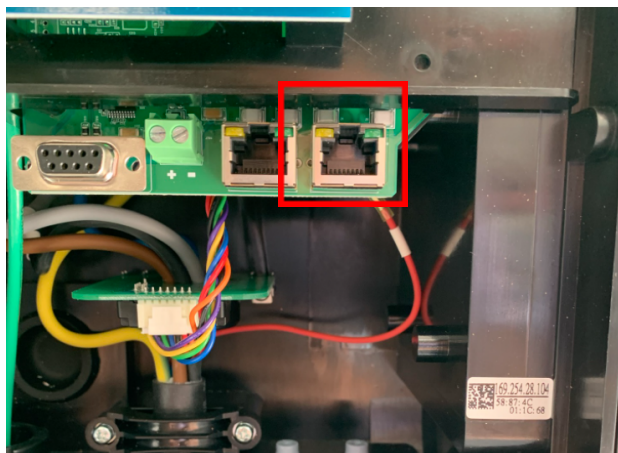


Table of Contents

Connect to the Loop EVSE	2
Access the Loop EVSE Webportal	2
Cellular configuration	3
WiFi configuration	5
Confirm Loop's OCPP	7
Reboot the Loop EVSE (SIM connection Only)	7

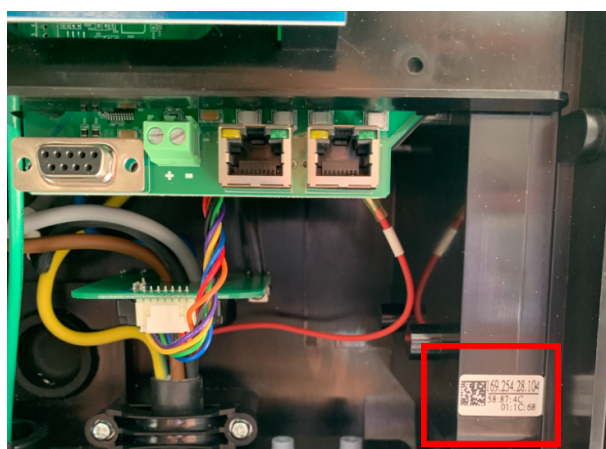
Connect to the Loop EVSE

Remove the Loop front cover to access the RJ45 Ethernet port. Please connect a computer to the EVSE using an Ethernet cable by plugging one end of the Ethernet cable to the right RJ45 port and the other end to a computer.



Access the Loop Web-Portal

Once connected to the EVSE, please open an internet web-browser (ie. Chrome, Safari, etc.) and navigate to the corresponding IP address detailed on a label inside of the charging station.





The following log in screen should appear.

The login screen features the Loop logo at the top, followed by the text "Loop EV Charging Station Webportal". Below this, there are two input fields: "User Name:" and "Password:". A "Login" button is positioned below the password field.

Please use the default login credentials:

username: admin
password: LoopEVCN_L2

Cellular Configuration

Navigate to the "Communications Settings" tab. Find the "Connectivity" setting then select "Cellular"

The configuration page shows a sidebar with options: Configuration, Maintenance, EVSE Status, LLM Status, and Security. The main content area has tabs for Factory Settings, Station Settings, OCPP Settings, and Communication Settings. The Communication Settings tab is selected. Under "Network Mode*", "Direct" is selected. Under "Group Use External Gateway*", "Yes" is selected. Under "Connectivity", "Cellular" is selected. Below this is a section for "Gateway/Client Settings" with fields for Client Connectivity (None), Gateway Serial Number, Gateway LAN IP (192.168.199.1), Gateway LAN Port (SOAP) (8080), Max Group Size (20), and Hide AP SSID (Off).



Scroll down to the “Cellular APN” setting and enter **sentinel.vf**.

Cellular Settings	
MNC:	
ICCID:	
IMSI:	
IMEI:	866425037800341
MEID:	866425037800341
Cellular APN:	sentinel.vf
Cellular APN User:	
Cellular APN Password:	
Cellular Dial Number:	*99#
Cellular PIN Code:	
Primary DNS:	
Secondary DNS:	
Cellular Signal Strength:	
Cellular Reconnect Interval:	5

Scroll down to the bottom of the page and click “apply”

Local Load Management(LLM) Settings	
Local Load Management*:	Disable ▾
Charging Policy*:	Uniform Distribution ▾
Group ID:	
Group Size:	1
Max Amperage Grid Connection:	100
Fallback Current:	6
<input type="button" value="✔ Apply"/>	



Wi-Fi Configuration

If using the Loop Network Router, please make sure it is turned on, online, and nearby or otherwise confirm that there is a reliable Wi-Fi signal next to the charging station.

Navigate to the "Communications Settings" tab. Find the "Connectivity" setting then select "Wi-Fi"

Configuration
Maintenance
EVSE Status
LLM Status
Security

Factory Settings | Station Settings | OCPP Settings | **Communication Settings**

Network Mode*: Direct
Group Use External Gateway*: Yes
Connectivity: **Wi-Fi**

Gateway/Client Settings

Client Connectivity: None

Gateway Serial Number:
Gateway LAN IP: 192.168.199.1
Gateway LAN Port (SOAP): 8080
Max Group Size: 20
Hide AP SSID: Off

Scroll down to the Wi-Fi Settings section then click SCAN. After the scan has been completed, click the SSID: dropdown menu and select the desired Wi-Fi network to connect.

Wi-Fi Settings

SSID: Loop EVCN
Security: Franky
Password: Lemonade_Guest
BSSID: Loop EVCN-Aruba
Wi-Fi MAC Address: FrankyGoes2Hollywood
Wi-Fi Signal Strength: IC3-185200192
Station Only: ngHub_3194
filmthis
ngHub_319464N9004AC

MNC: **Loop EVCN**
ICCID:



Type in the password for the Wi-Fi network.

Wi-Fi Settings

SSID: Loop EVCN

Security: Auto

Password:

BSSID:

Wi-Fi MAC Address: 9E:65:F9:0A:34:3C

Wi-Fi Signal Strength: 100 %

Station Only: OFF

Scroll down to the bottom of the page and click "apply"

Local Load Management(LLM) Settings

Local Load Management*: Disable

Charging Policy*: Uniform Distribution

Group ID:

Group Size: 1

Max Amperage Grid Connection: 100 Amps

Fallback Current: 6 Amps



Confirm Loop's OCPP URL

Navigate to the "OCPP Settings" tab. Then confirm the "Remote Control Type" is set to "OCPP" and the "Central System URL" is set to the following:
"wss://steve.evloop.io/steve/websocket/CentralSystemService"

Factory Settings | Station Settings | **OCPP Settings** | Communication Settings

Remote Control Settings

Remote Control Type*:

Service Settings

Charge Point ID*:

Protocol Name:

Central System URL*:

Basic Auth ID*:

Reboot the Loop EVSE (SIM connection Only)

After completing these steps, navigate to the "Maintenance" tab on the left sidebar, and click "Reboot".

loop
ev charging network

Configuration
Maintenance
EVSE Status
LLM Status
Security

Command

Charging Profile Data

Once the unit has been rebooted, it will connect to the LTE network within 3 to 5 minutes.